

INSTALLATION INSTRUCTIONS

HORIZONTAL CABLE RAILING 3" ALUMINUM POSTS

3" x 36", 3" X 42" AND 3" X 48" POSTS FOR 36" AND 42" HIGH RAILINGS

It is the responsibility of the installer to meet all local code requirements and obtain all required building permits. The installer should determine and implement appropriate installation techniques for each installation situation. The manufacturer or its reseller shall not be held responsible for improper or unsafe installation.

THESE INSTRUCTIONS COVER INSTALLATION OF A HORIZONTAL CABLE RAILING SYSTEM. PLEASE VISIT MANUFACTURER'S WEBSITE FOR OTHER RAILING SYSTEMS.

IMPORTANT NOTES:

- Do not install base plate covers until railing assembly is completed.
- Actual cable panel lengths: 69.43" and 91.31"
- 3" posts are required to reach 6' and 8' lengths.
- 42" post kits are required for middle and bottom stair posts with the 36" railing system.
- 48" post kits are required for middle and bottom stair posts with the 42" railing system.
- All illustrations show the 36" system. Measurements for the 42" system are included.

IMPORTANT: IF INSTALLING LIGHTING, WIRING MUST BE INSTALLED PRIOR TO SECURING POSTS TO DECK SURFACE AND INSTALLING TOP RAIL SNAPS.

SUGGESTED TOOLS:
Cordless Drill,
3/16" Drill Bit,
5/8" Drill Bit (optional),
Safety Glasses

1 Determine Necessary Posts Required (end, inline and corner)

- **NOTE:** For structural integrity and proper installation, it is critical to use the correct Railing Posts in all locations. (Dia. 1). Corner Posts are required for all 90° corners and in-line posts are required for all 45° corners. 42" stair posts are required for 36" stair applications; 48" stair posts are required for 42" stair applications. Plan ahead for cables up to 60' in length and install end posts at the appropriate locations.
- **IMPORTANT:** For 90° corner post applications. Prior to installing railing attachment clips, ensure plastic plugs are installed in 2 pre-drilled hole locations. Leave plastic plugs in place until threading cable through corner posts.

2 Prepare Posts

- **FOR DECK APPLICATIONS ONLY,** measure from the top of the base plate upper shoulder (Dia. 2), place a horizontal pencil mark at 33-13/16" for 36" rail height; or at 39-3/8" for 42" rail height. Next, measure the center of the 3" posts and place a vertical mark at center of post
- **Install One Upper Attach Clip Per Opening.** Center one (1) upper clip on pencil line which was marked in previous step (Dia. 2). Secure attach clip with (2) - #8x3/4" Self-Tapping Screws (Dia. 4). **IMPORTANT:** Only install 1-upper clip per opening.
- **Full Frame Kits Only (with bottom rail):** Using the lower clip jig included with the post kits, install lower clip on post and secure with (2) - #8x3/4" Self-Tapping Screws (Dia. 3). Clips & screws are located in the Panel Kit
- **IMPORTANT:** Stair posts planning and preparation is addressed in the horizontal cable installation instructions (included with panel kits).
- **Top Rail Kits (without bottom rail):** If no bottom rail is installed, do not install lower rail clips. Bottom rail, bottom rail snap, lower rail clips and support legs are not included in top rail kits. **IMPORTANT:** For safety and to comply with building codes, 10th cable must be installed with 36" rail height.

3 Secure Posts to Deck

- Install proper post blocking as per (Dia. 5). Use proper attachment screws or anchors as directed below. (Deck screws at each post location, are not included with post kits, see Post-To-Surface Mounting Screw Suggestion.
- With 3/16" drill bit, pre-drill through deck boards and into blocking.
- Drill a 5/8" hole in center of four deck screw holes for lighting wires (optional).
- Level and plumb post using shims.
- Secure posts to deck with suggested screws.

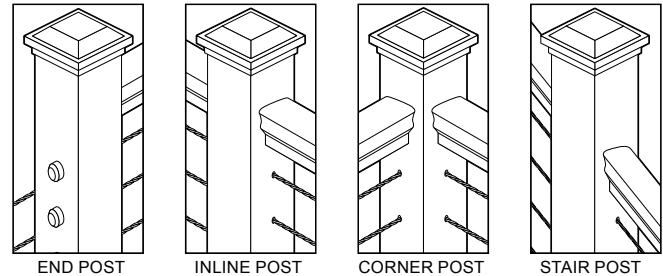
POST-TO-SURFACE MOUNTING SCREWS:

3" Posts – Residential Deck Applications – 5/16" X 6" Exterior Torx/Star Drive Construction Screws
3" Posts – Commercial Deck Applications – 3/8" X 6" Exterior Torx/Star Drive Construction Screws
3" Posts – Residential Concrete Applications – Tapcon® 5/16" x 3" Hex Washer Head Concrete Anchor

4 Install Post Caps and Base Plate Vinyl Covers

Install post caps and base plate vinyl covers after railing assembly is completed. (Dia. 6)

Dia. 1



Dia. 2

PLACE A VERTICAL MARK AT CENTER OF POST

MEASURE FROM TOP OF BASE PLATE UPPER SHOULDER AND PLACE A HORIZONTAL PENCIL MARK AT 33-13/16" FOR 36" RAIL HEIGHT; OR AT 39-3/8" FOR 42" RAIL HEIGHT.

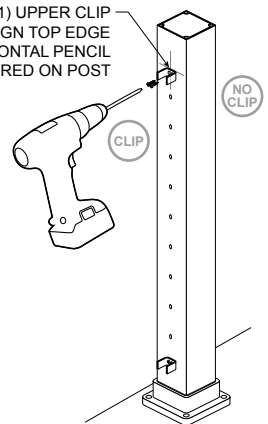
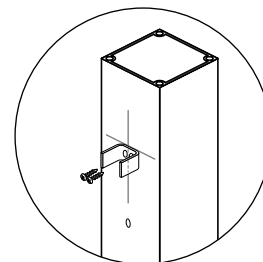
Dia. 3

REST JIG ON BASE PLATE HERE - ARROW DOWN

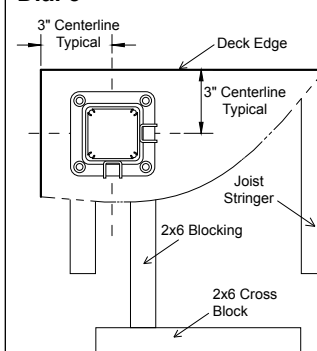
PLACE CLIP IN HOLE, HOLD CLIP FIRMLY WHILE INSTALLING (2) SELF-TAPPING SCREWS.

Dia. 4

INSTALL ONLY ONE (1) UPPER CLIP PER OPENING. ALIGN TOP EDGE OF CLIP ON HORIZONTAL PENCIL LINE, CENTERED ON POST



Dia. 5



3/16" holes for deck screws
5/8" hole for lighting wires (optional)

Shims below base
Post-to-Surface Mounting Screws (dependent on application)

Dia. 6

