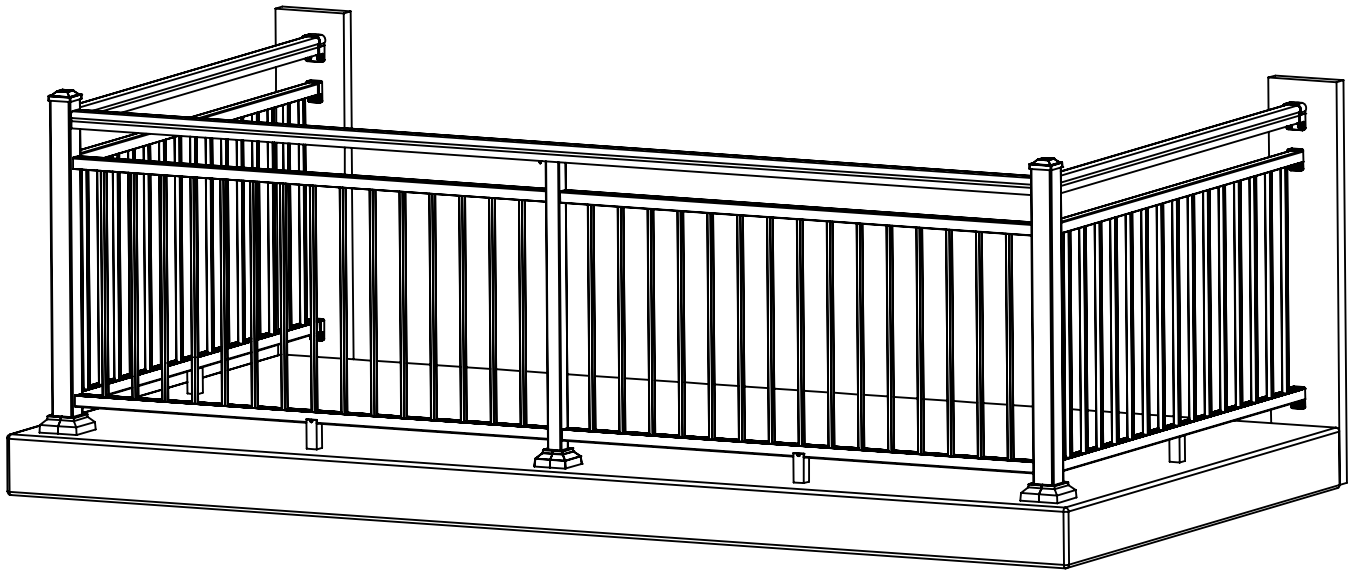
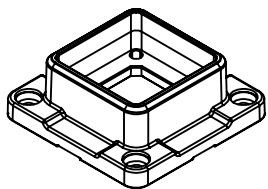


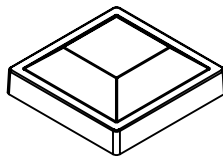
BALUSTER RAIL WITH OPEN MID-RAIL, 3" POSTS, 2" CENTER POST, WALL MOUNTED



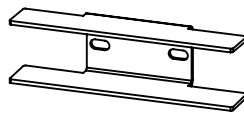
ISOMETRIC VIEW



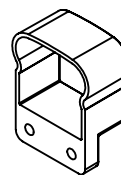
POST BASE
(PART NUMBER VARIES
BY SIZE)



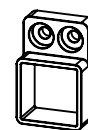
POST CAP
(PART NUMBER VARIES
BY SIZE)



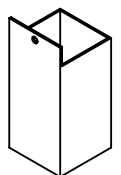
RAIL
CROSS-OVER CLIP
CL044104



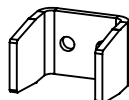
TOP RAIL
WALL MOUNT
(PART NUMBER VARIES
BY STYLE)



BOTTOM RAIL
WALL MOUNT
(PART NUMBER VARIES
BY STYLE)

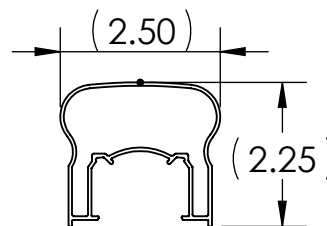


RAIL PANEL
SUPPORT LEG
(PART NUMBER VARIES
BY STYLE)



RAIL
PANEL CLIP
CL09410

PART REFERENCE



VICTORIAN
SERIES
VT393100

TOP RAIL PROFILE OPTIONS

PROPRIETARY AND CONFIDENTIAL

THE INFORMATION CONTAINED IN THIS DRAWING IS THE SOLE PROPERTY OF UltraLox.
ANY REPRODUCTION IN PART OR AS A WHOLE WITHOUT THE WRITTEN PERMISSION OF UltraLox IS NOT PERMITTED.

