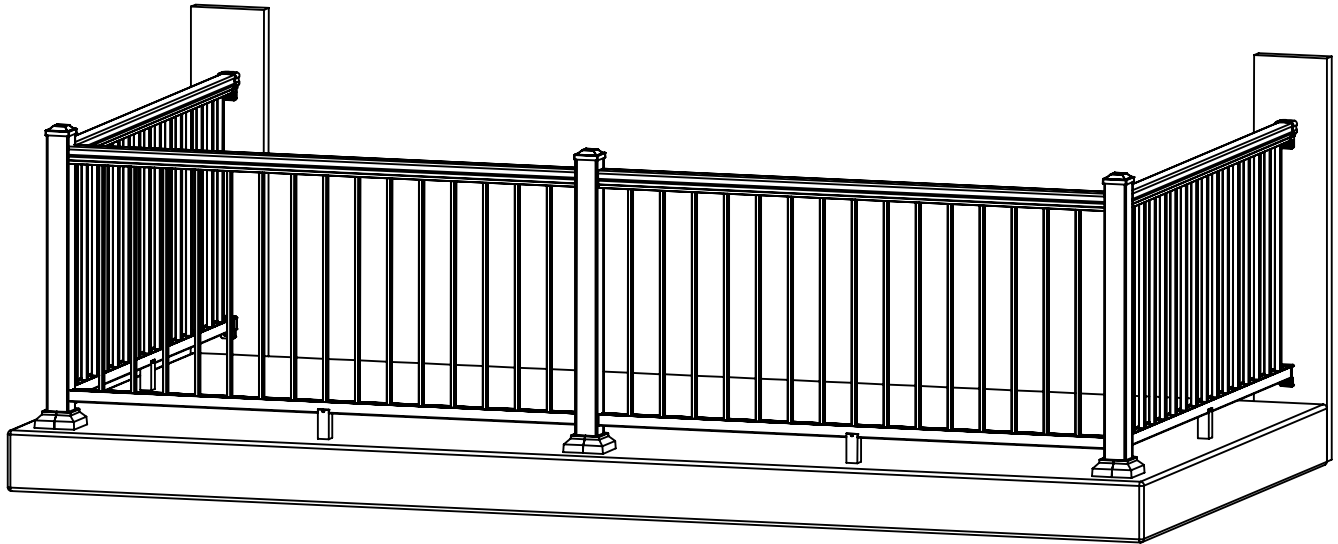
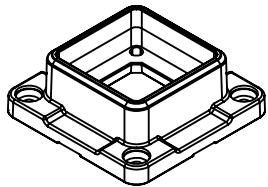


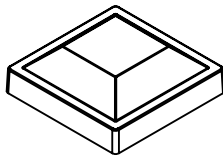
# STANDARD Baluster RAIL, 3" POSTS, WALL MOUNTED



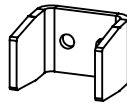
## ISOMETRIC VIEW



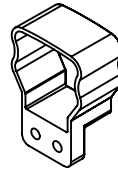
POST BASE  
(PART NUMBER VARIES  
BY SIZE)



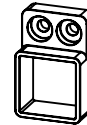
POST CAP  
(PART NUMBER VARIES  
BY SIZE)



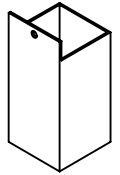
RAIL  
PANEL CLIP  
CL09410



TOP RAIL  
WALL MOUNT  
(PART NUMBER VARIES  
BY STYLE)

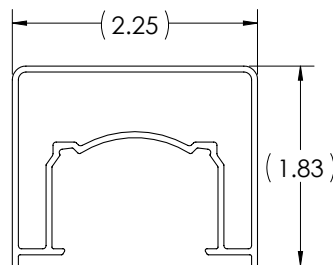


BOTTOM RAIL  
WALL MOUNT  
(PART NUMBER VARIES  
BY STYLE)

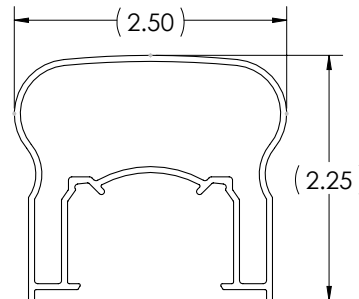


RAIL PANEL  
SUPPORT LEG  
(PART NUMBER VARIES  
BY STYLE)

## PART REFERENCE



ALTA  
SERIES  
AL825100

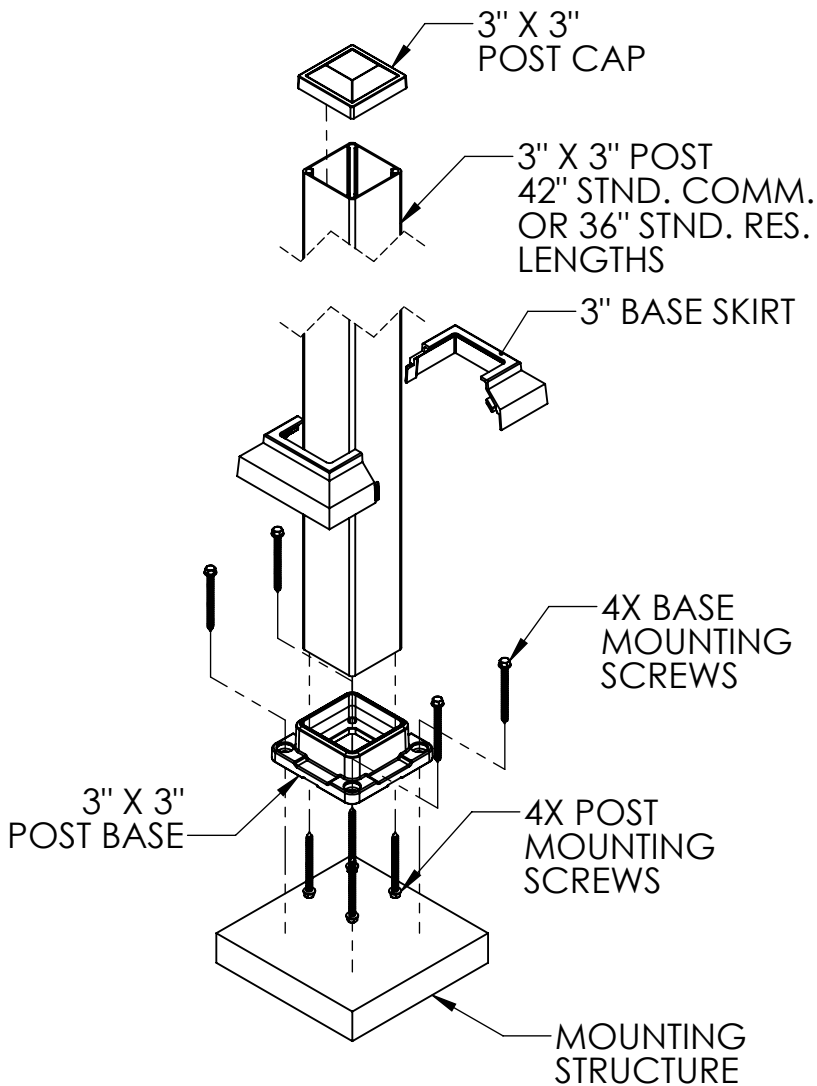


VICTORIAN  
SERIES  
VT393100

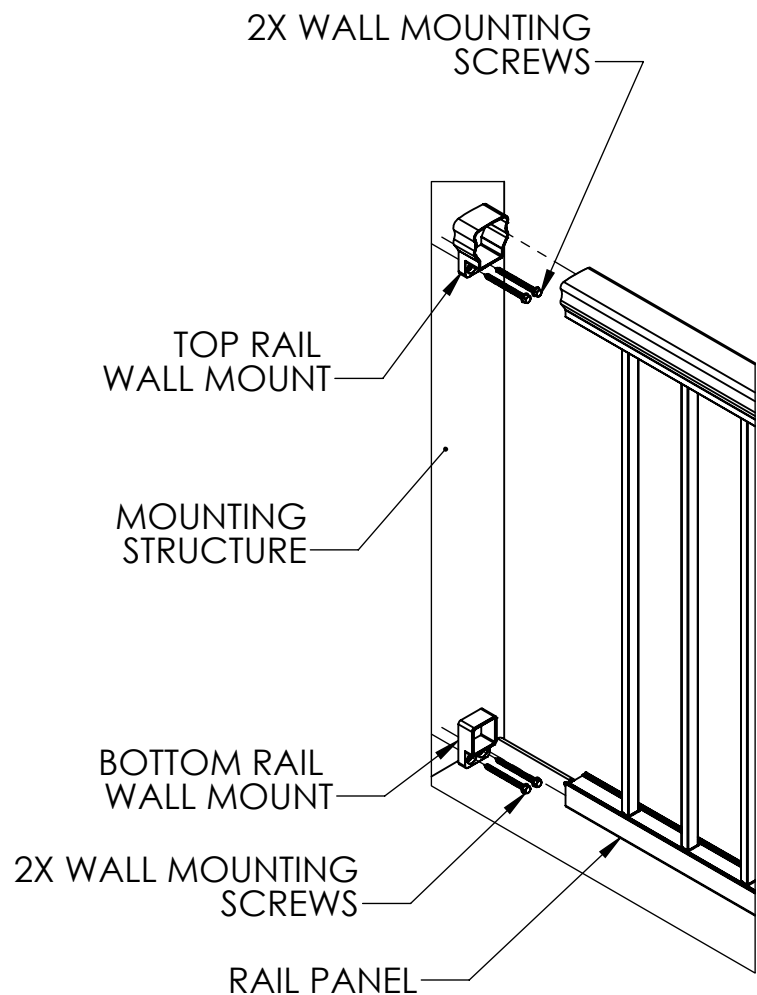
## TOP RAIL PROFILE OPTIONS

PROPRIETARY AND CONFIDENTIAL

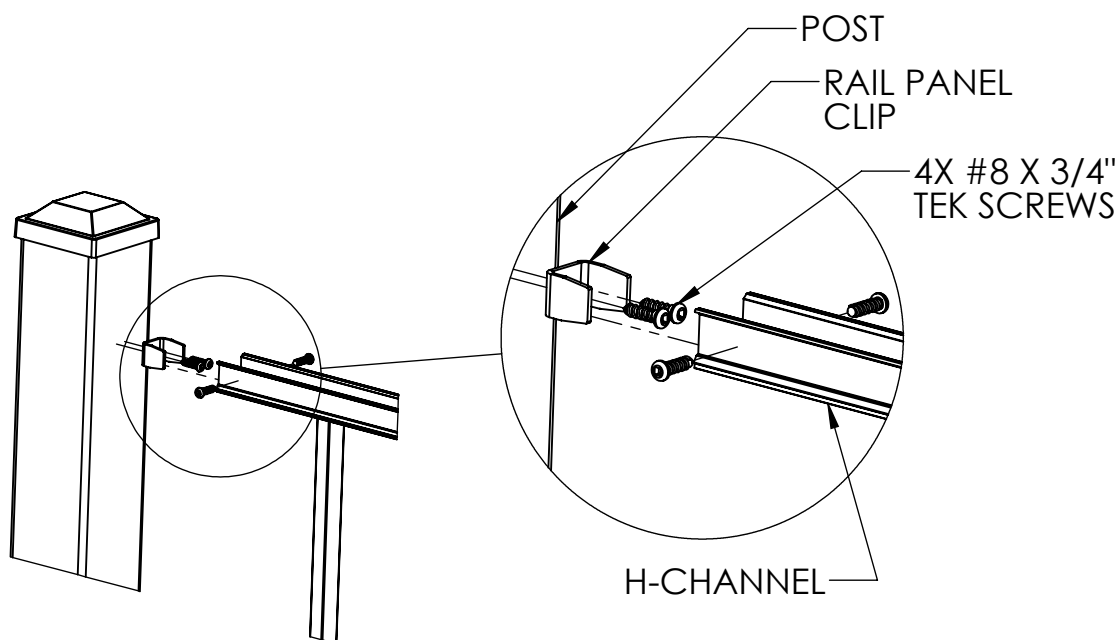
THE INFORMATION CONTAINED IN THIS DRAWING IS THE SOLE PROPERTY OF UltraLox.  
ANY REPRODUCTION IN PART OR AS A WHOLE WITHOUT THE WRITTEN PERMISSION OF UltraLox IS NOT PERMITTED.



## POST DETAIL



## WALL MOUNT DETAIL



## RAIL PANEL CLIP DETAIL