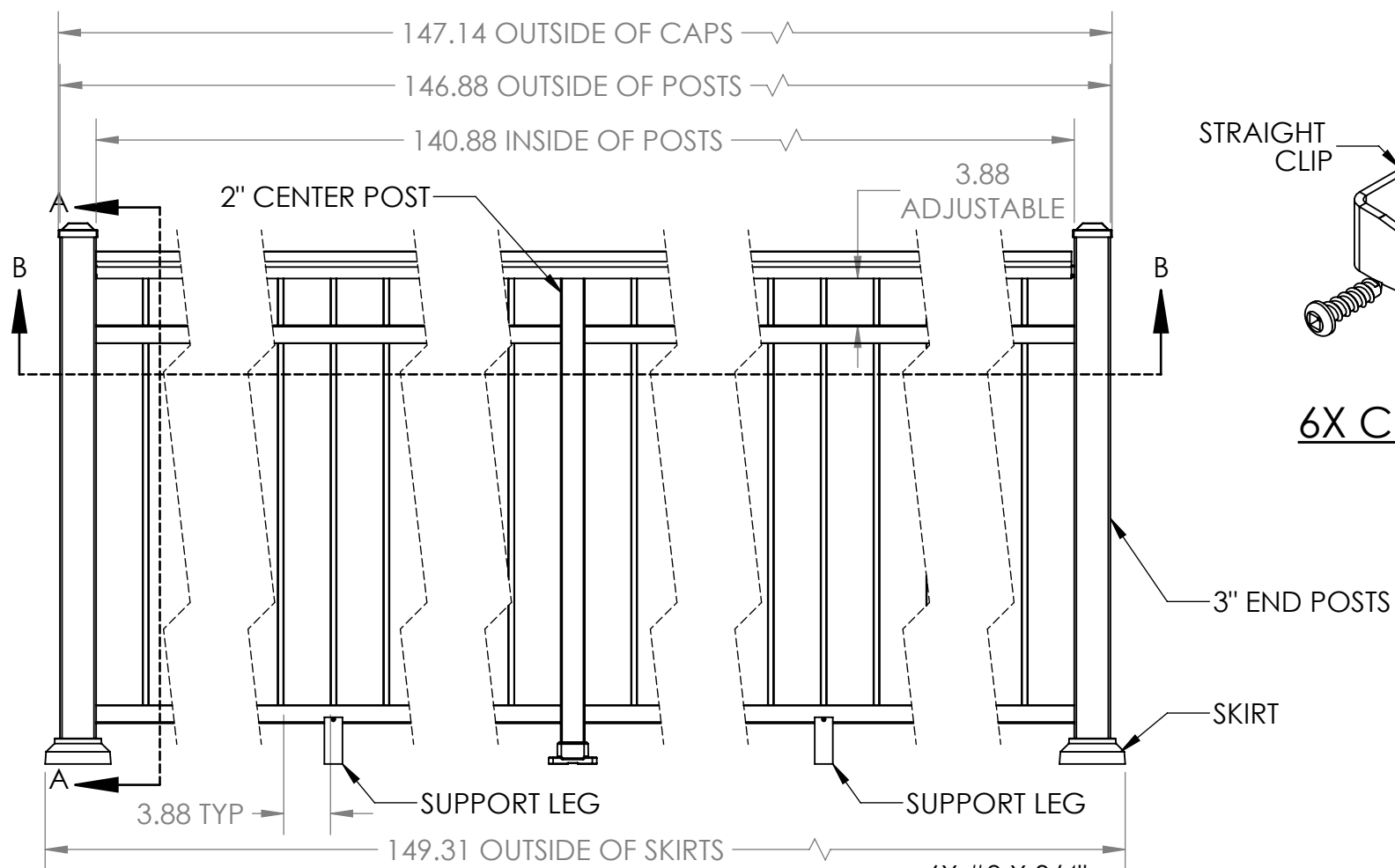


4

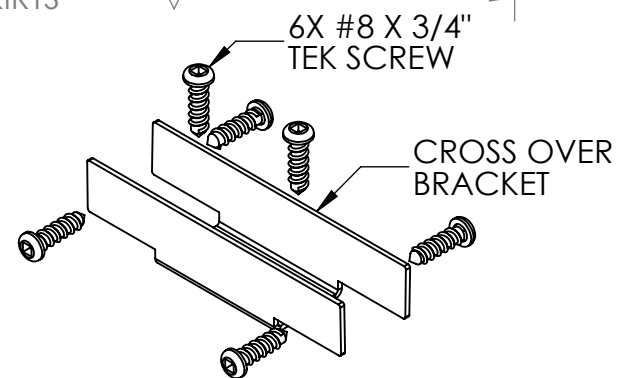
3

2

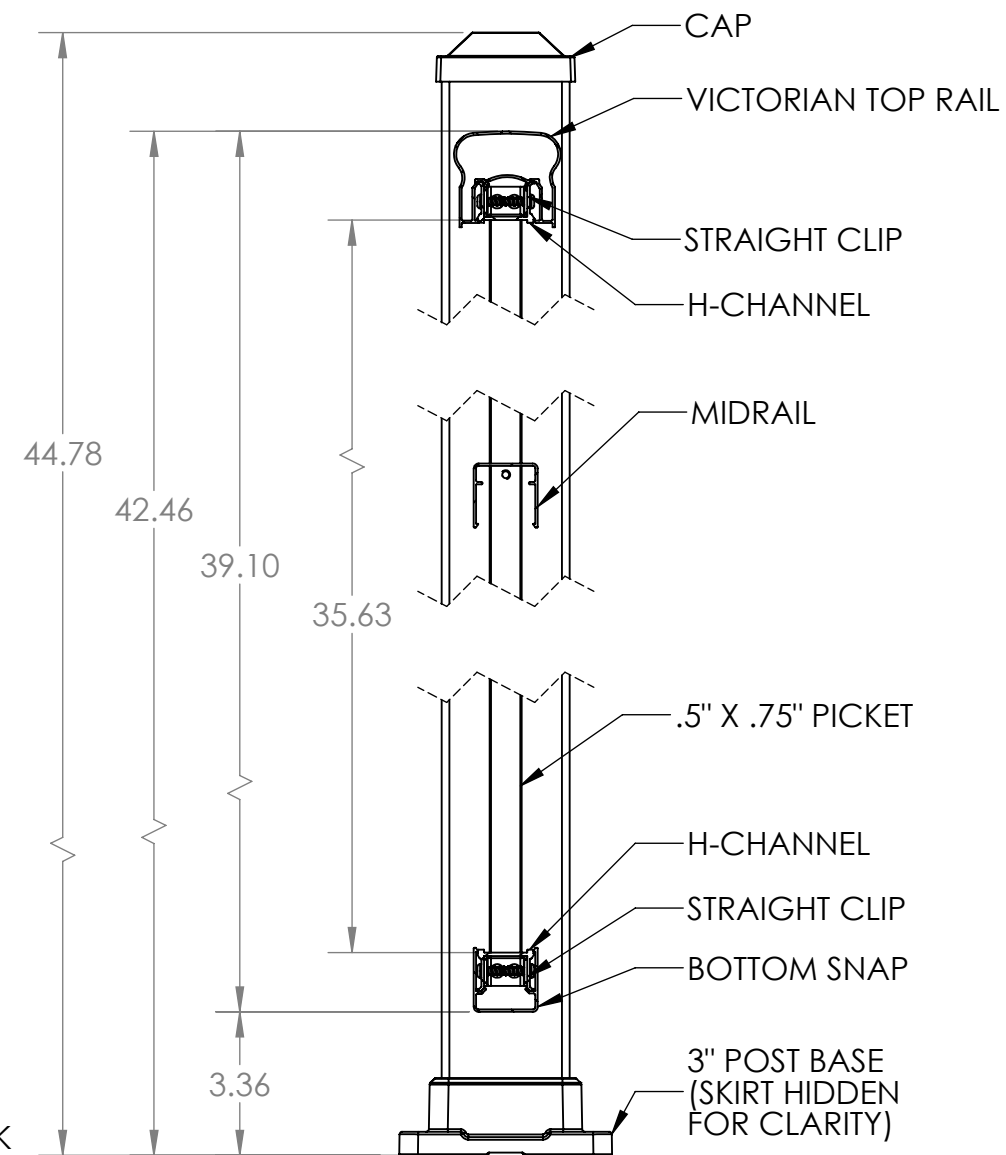
1

STRAIGHT  
CLIP4X #8 X 3/4"  
TEK SCREW

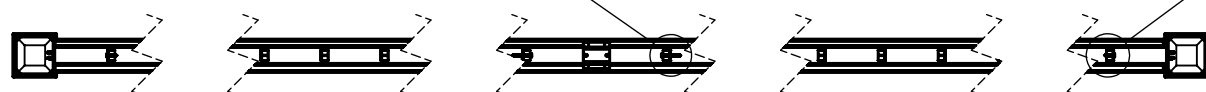
6X CLIP DETAIL





1X 2" CROSS  
OVER BRACKET  
(MOUNTS ON TOP  
OF CENTER POST)

#10 x 1.50" TEK  
SCREW SECURES  
MIDRAIL TO PICKET#10 x .75" TEK  
SCREW SECURES  
MIDRAIL TO PICKET

SECTION A-A



NOTES:  
1. ALL RAIL MUST BE ASSEMBLED AND FASTENED IN ACCORDANCE WITH ULTRALOX'S INSTALLATION INSTRUCTIONS.  
2. AVAILABLE COLORS ARE BLACK - WHITE - BRONZE.

UNLESS OTHERWISE SPECIFIED:		NAME	DATE		
DIMENSIONS ARE IN INCHES TOLERANCES: SURFACE FINISH: 125 RMS ANGULAR: ±.5 DEG LINEAR: .X ±.02 .XX ±.010 .XXX ±.005		DRAWN	ZAG		
		CHECKED		TITLE: SHOP DRAWING, VICTORIAN TOP RAIL, CONTINUOUS, 3" END POSTS, 2" CENTER POST, 42" PICKETS THRU MIDRAIL, 6' SECTION	
		ENG APPR.			
		MFG APPR.			
THIRD ANGLE PROJECTION: 		INTERPRET GEOMETRIC TOLERANCING PER: ASME Y14.5-2009		SIZE <b>B</b> DWG. NO.  REV <b>A</b>	
MATERIAL		<b>PROPRIETARY AND CONFIDENTIAL</b>			
FINISH		THE INFORMATION CONTAINED IN THIS DRAWING IS THE SOLE PROPERTY OF UltraLox. ANY REPRODUCTION IN PART OR AS A WHOLE WITHOUT THE WRITTEN PERMISSION OF UltraLox.			
DO NOT SCALE DRAWING				SCALE: 1:10 WEIGHT:	SHEET 1 OF 1

ULTRALOX<sup>®</sup>  
RAILING SYSTEMS

TITLE: SHOP DRAWING,  
VICTORIAN TOP RAIL,  
CONTINUOUS, 3" END POSTS,  
2" CENTER POST,  
42" PICKETS THRU MIDRAIL,  
6' SECTION