

4

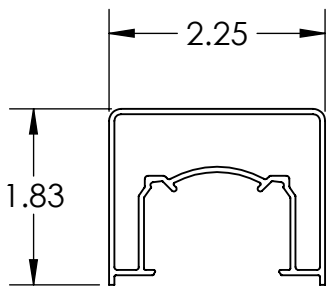
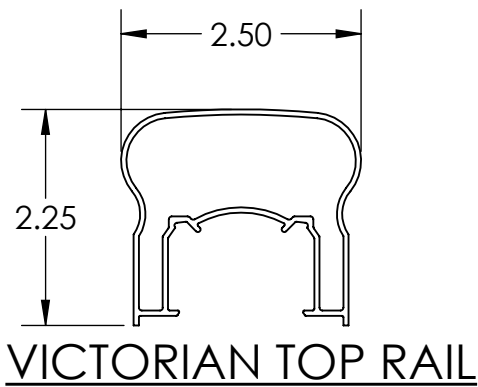
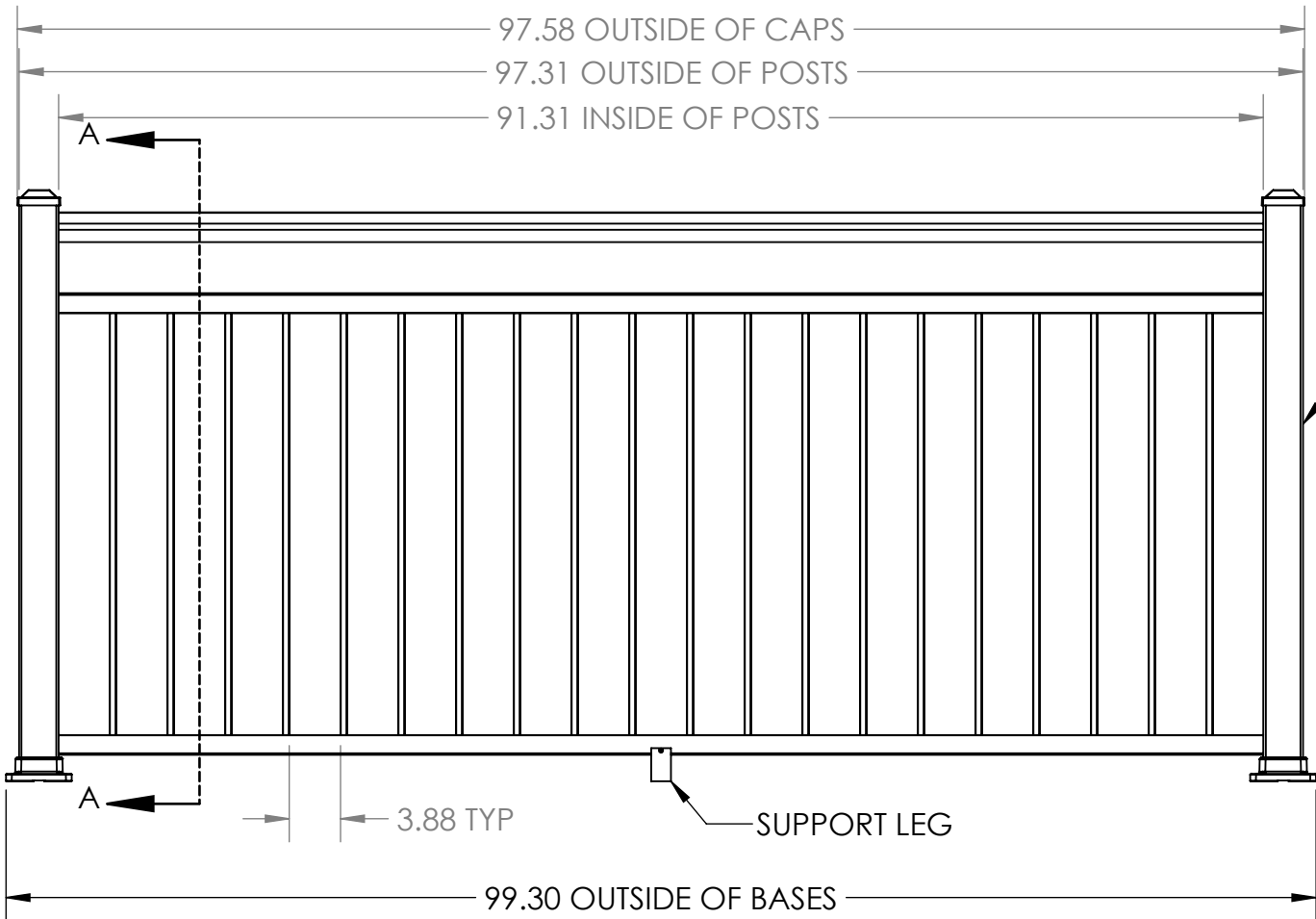
3

2

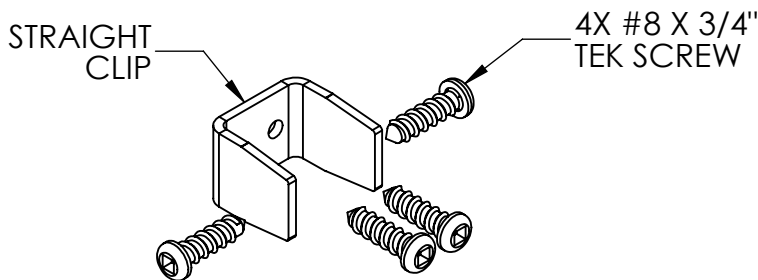
1

REVISIONS - BALLOONS DENOTE CHANGES			
REV.	DESCRIPTION	DATE	APPROVED
A		4/13/2020	ZAG

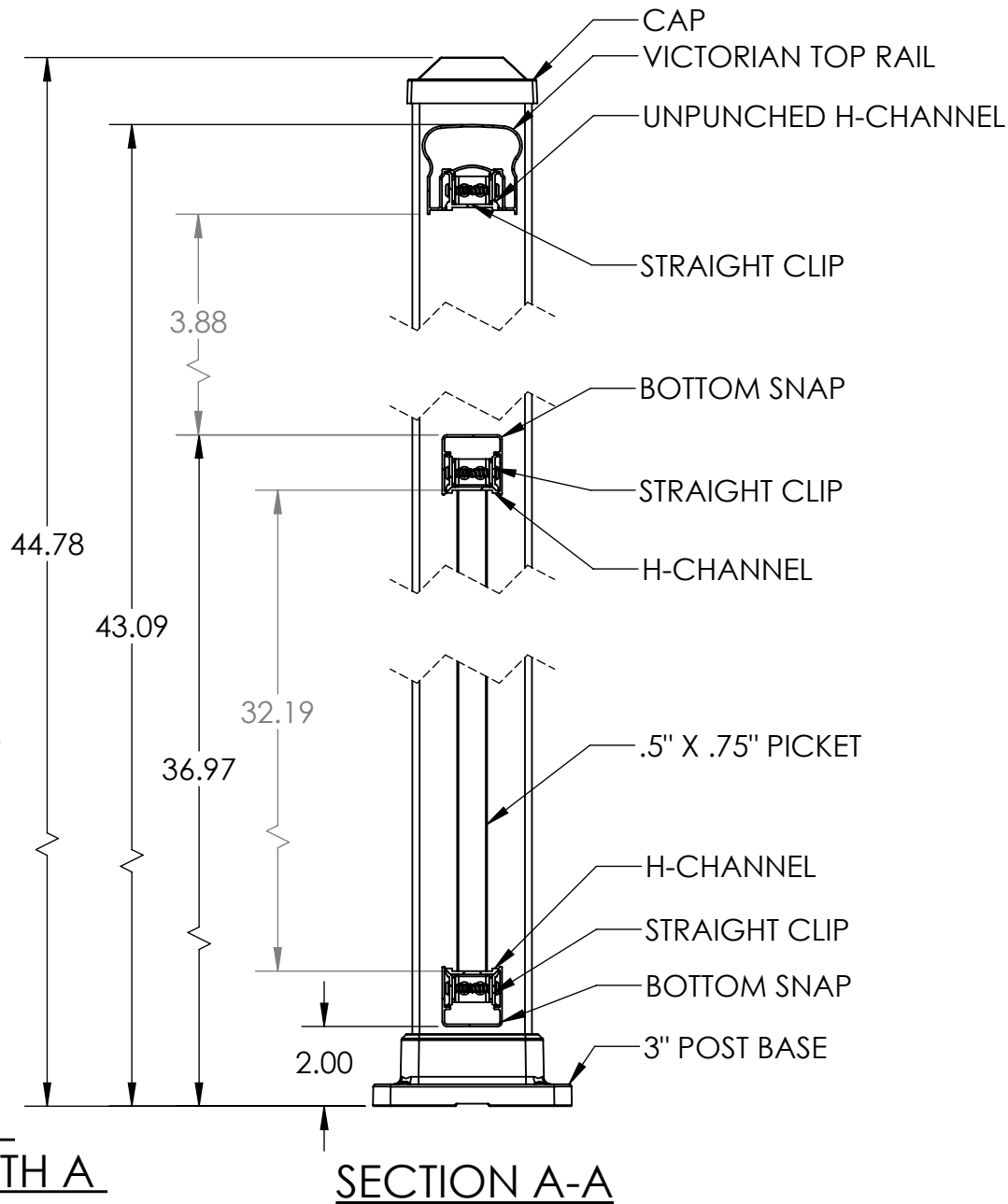
B



ALTA TOP RAIL IS AN
ALTERNATIVE OPTION WITH A
42.67" OVERALL HEIGHT



6X CLIP DETAIL





B

A

A

NOTES:
1. ALL RAIL MUST BE ASSEMBLED AND FASTENED IN ACCORDANCE WITH ULTRALOX'S INSTALLATION INSTRUCTIONS.
2. AVAILABLE COLORS ARE BLACK - WHITE - BRONZE.

UNLESS OTHERWISE SPECIFIED:		NAME	DATE			
DIMENSIONS ARE IN INCHES TOLERANCES: SURFACE FINISH: 125 RMS ANGULAR: ±.5 DEG LINEAR: .X ±.02 .XX ±.010 .XXX ±.005	DRAWN	DRC	4/13/20	TITLE: POST-TO-POST 42" TOP RAIL PICKET WITH OPEN MID RAIL 3" END POSTS - BASE MOUNT 8' SECTION - 2" BOTTOM GAP		
	CHECKED					
	ENG APPR.					
	MFG APPR.					
THIRD ANGLE PROJECTION:			INTERPRET GEOMETRIC TOLERANCING PER: ASME Y14.5-2009			
MATERIAL	PROPRIETARY AND CONFIDENTIAL			SIZE	DWG. NO.	REV
FINISH	THE INFORMATION CONTAINED IN THIS DRAWING IS THE SOLE PROPERTY OF UltraLox. ANY REPRODUCTION IN PART OR AS A WHOLE WITHOUT THE WRITTEN PERMISSION OF UltraLox.			B		A
DO NOT SCALE DRAWING					WEIGHT:	SHEET 1 OF 1

4

3

2

1