

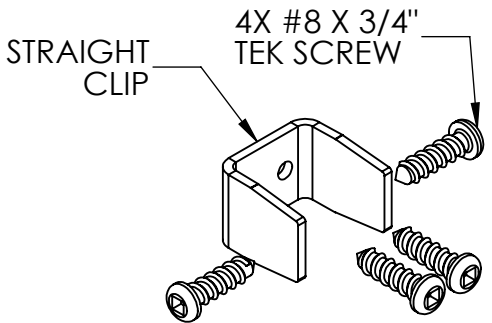
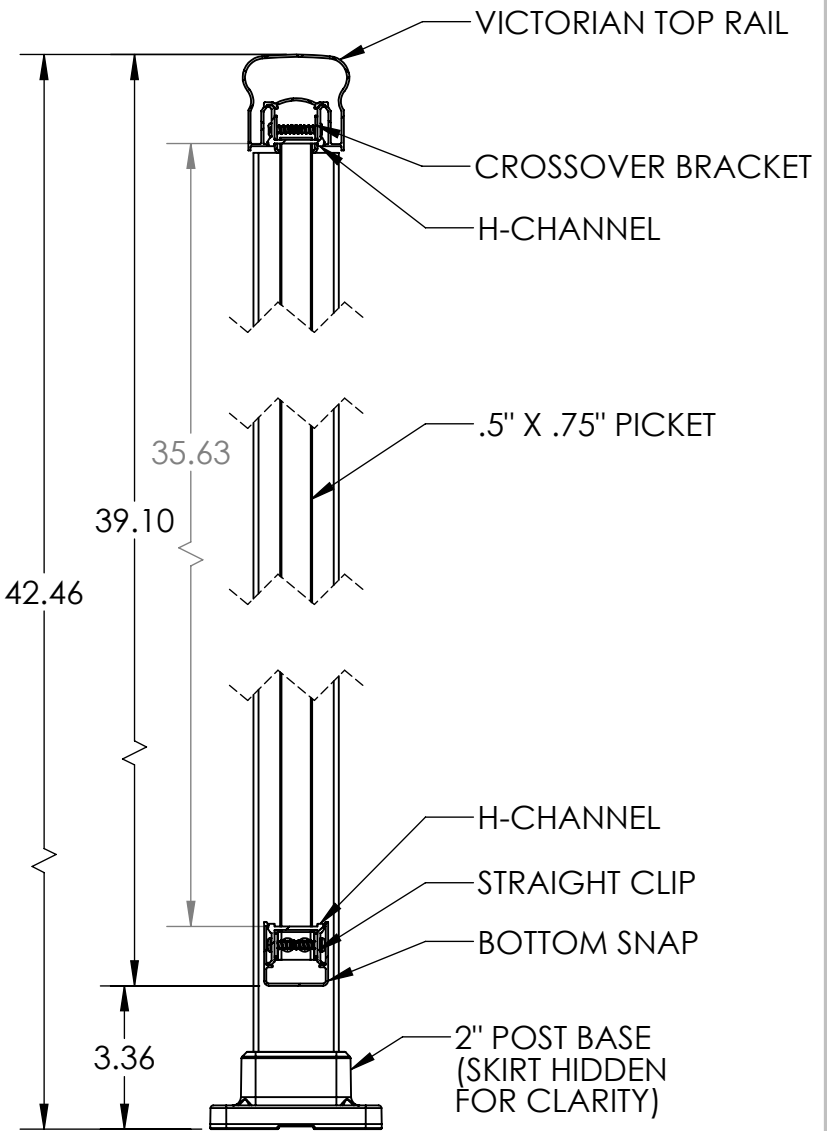
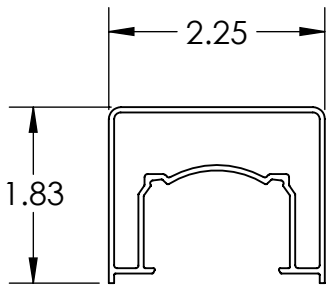
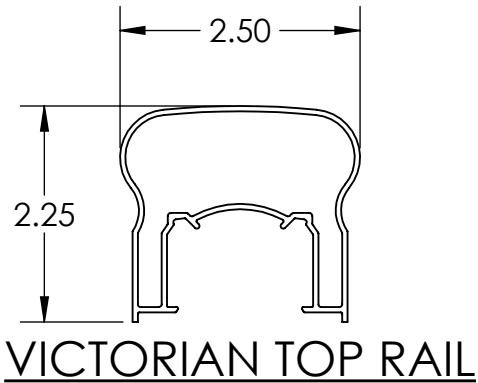
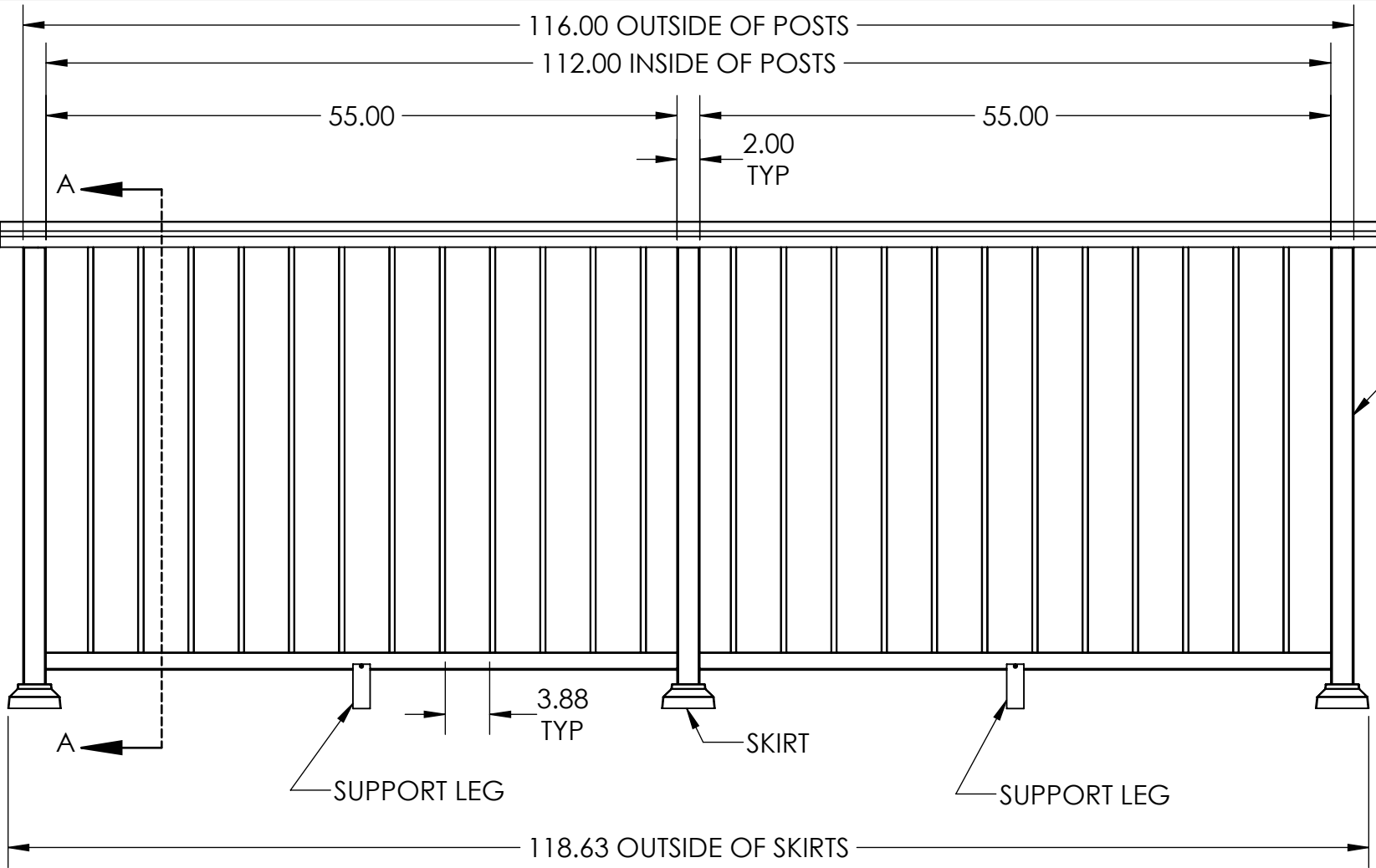
4

3

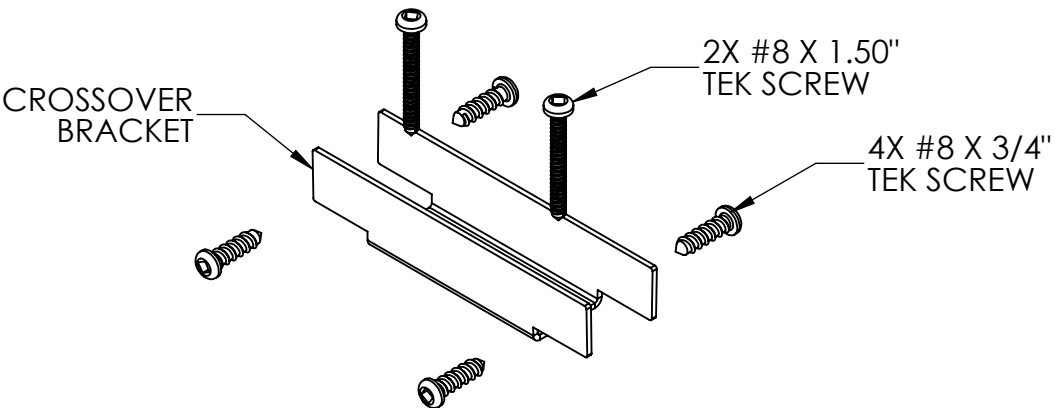
2

1

REVISIONS - BALLOONS DENOTE CHANGES			
REV.	DESCRIPTION	DATE	APPROVED
A		12/10/2019	ZAG





4X CLIP DETAIL



3X 2" CROSSOVER BRACKET
(MOUNTS ON TOP OF POSTS)

NOTES:
1. ALL RAIL MUST BE ASSEMBLED AND FASTENED IN ACCORDANCE WITH ULTRALOX'S INSTALLATION INSTRUCTIONS.
2. AVAILABLE COLORS ARE BLACK - WHITE - BRONZE.

UNLESS OTHERWISE SPECIFIED:		NAME	DATE	<div> ULTRALOX® RAILING SYSTEMS</div>					
DIMENSIONS ARE IN INCHES TOLERANCES: SURFACE FINISH: 125 RMS ANGULAR: ±.5 DEG LINEAR: .X ±.02 .XX ±.010 .XXX ±.005		DRAWN	DRC	12/10/19	TITLE: CONTINUOUS 42" TOP RAIL PICKET INFILL 2" POSTS - BASE MOUNT 55" SECTIONS				
		CHECKED							
		ENG APPR.							
		MFG APPR.							
THIRD ANGLE PROJECTION: 		INTERPRET GEOMETRIC TOLERANCING PER: ASME Y14.5-2009			SIZE B				
MATERIAL		PROPRIETARY AND CONFIDENTIAL						DWG. NO.	REV A
FINISH		THE INFORMATION CONTAINED IN THIS DRAWING IS THE SOLE PROPERTY OF UltraLox. ANY REPRODUCTION IN PART OR AS A WHOLE WITHOUT THE WRITTEN PERMISSION OF UltraLox.							
DO NOT SCALE DRAWING									
				WEIGHT:		SHEET 1 OF 1			

4

3

2

1