

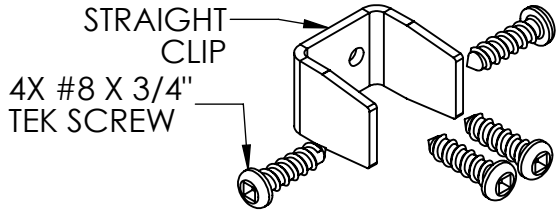
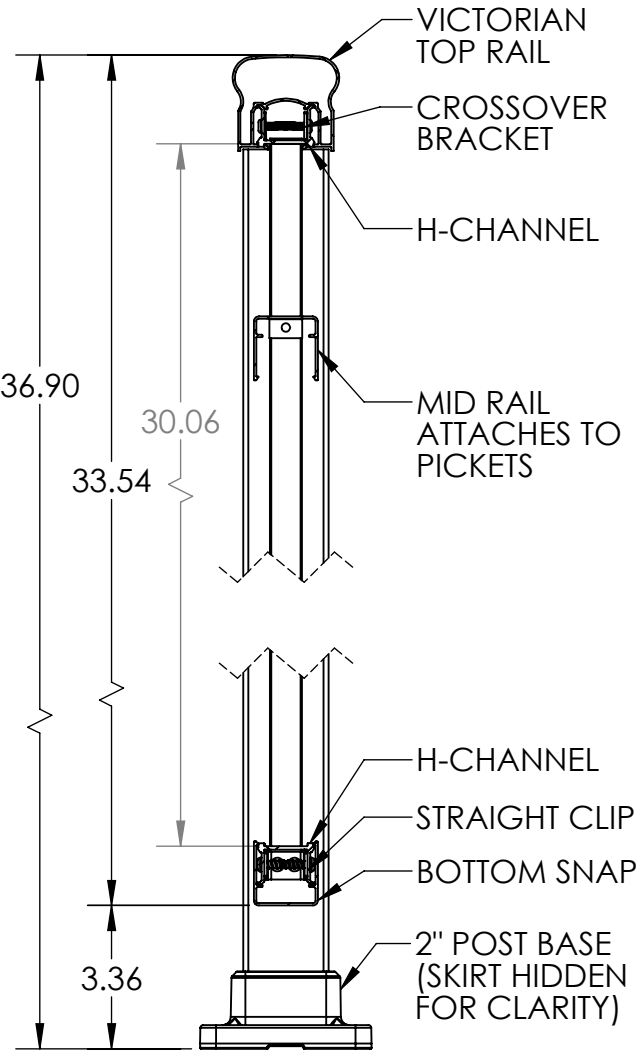
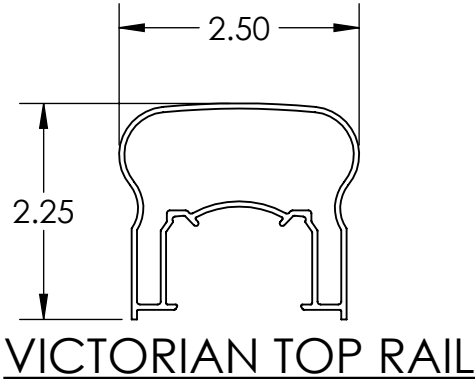
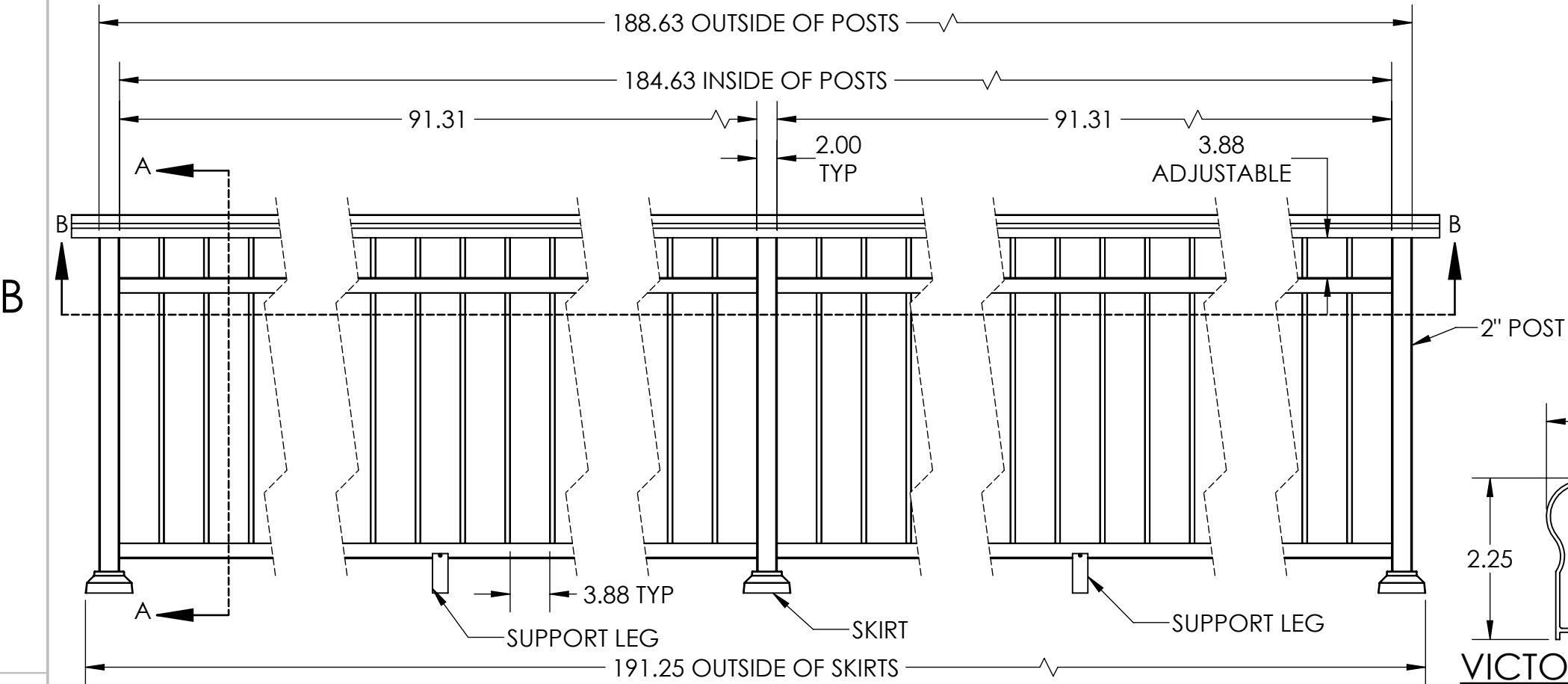
4

3

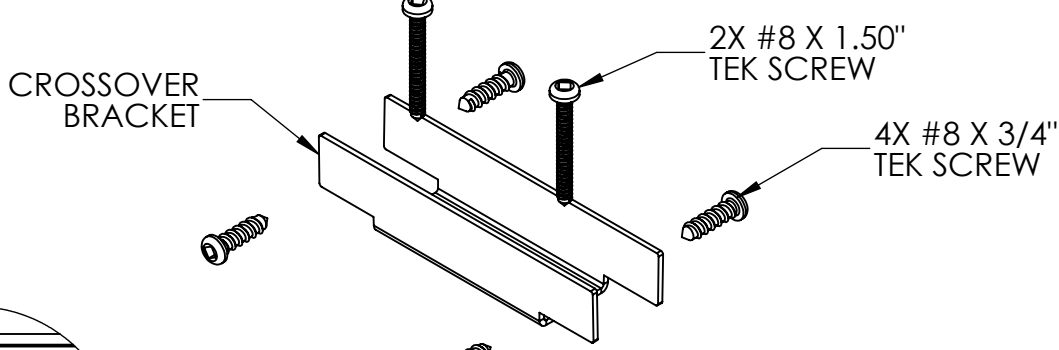
2

1

REVISIONS - BALLOONS DENOTE CHANGES			
REV.	DESCRIPTION	DATE	APPROVED
A		5/5/2020	ZAG



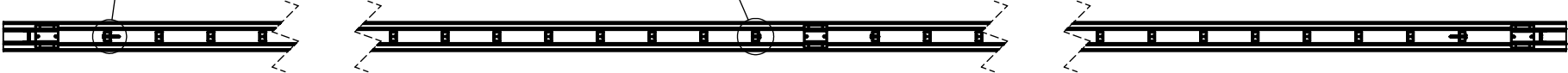
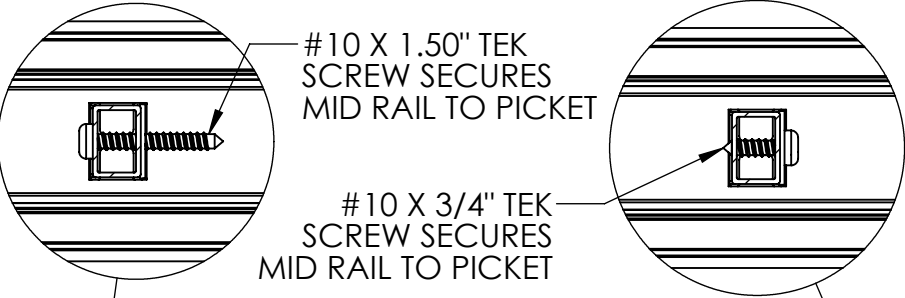
4X CLIP DETAIL





3X 2" CROSSOVER BRACKET (MOUNTS ON TOP OF POSTS)

ALTA TOP RAIL IS AN ALTERNATIVE OPTION WITH A 36.48" OVERALL HEIGHT

SECTION A-A



NOTES:
1. ALL RAIL MUST BE ASSEMBLED AND FASTENED IN ACCORDANCE WITH ULTRALOX'S INSTALLATION INSTRUCTIONS.
2. AVAILABLE COLORS ARE BLACK - WHITE - BRONZE.

UNLESS OTHERWISE SPECIFIED:		NAME	DATE			
DIMENSIONS ARE IN INCHES TOLERANCES: SURFACE FINISH: 125 RMS ANGULAR: ±.5 DEG LINEAR: .X ±.02 .XX ±.010 .XXX ±.005	DRAWN	DRC	5/5/20	TITLE: CONTINUOUS 36" TOP RAIL PICKET WITH MID RAIL 2" POSTS - BASE MOUNT 8' SECTIONS		
	CHECKED					
	ENG APPR.					
	MFG APPR.					
	THIRD ANGLE PROJECTION: 					INTERPRET GEOMETRIC TOLERANCING PER: ASME Y14.5-2009
MATERIAL	PROPRIETARY AND CONFIDENTIAL			SIZE	DWG. NO.	REV
FINISH	THE INFORMATION CONTAINED IN THIS DRAWING IS THE SOLE PROPERTY OF UltraLox. ANY REPRODUCTION IN PART OR AS A WHOLE WITHOUT THE WRITTEN PERMISSION OF UltraLox.			B		A
DO NOT SCALE DRAWING				WEIGHT:		SHEET 1 OF 1

TITLE:
CONTINUOUS 36" TOP RAIL
PICKET WITH MID RAIL
2" POSTS - BASE MOUNT
8' SECTIONS

4

3

2

1