

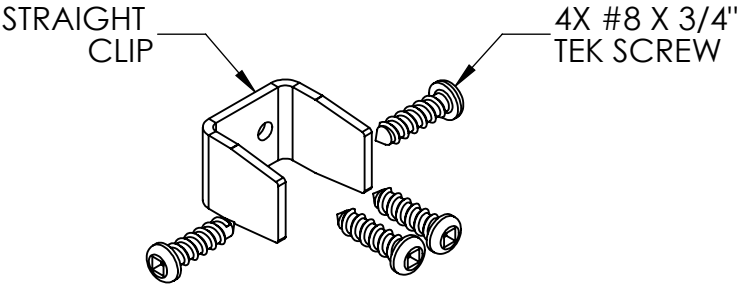
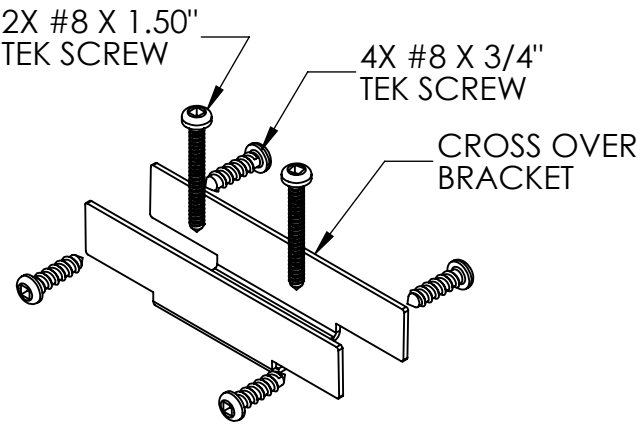
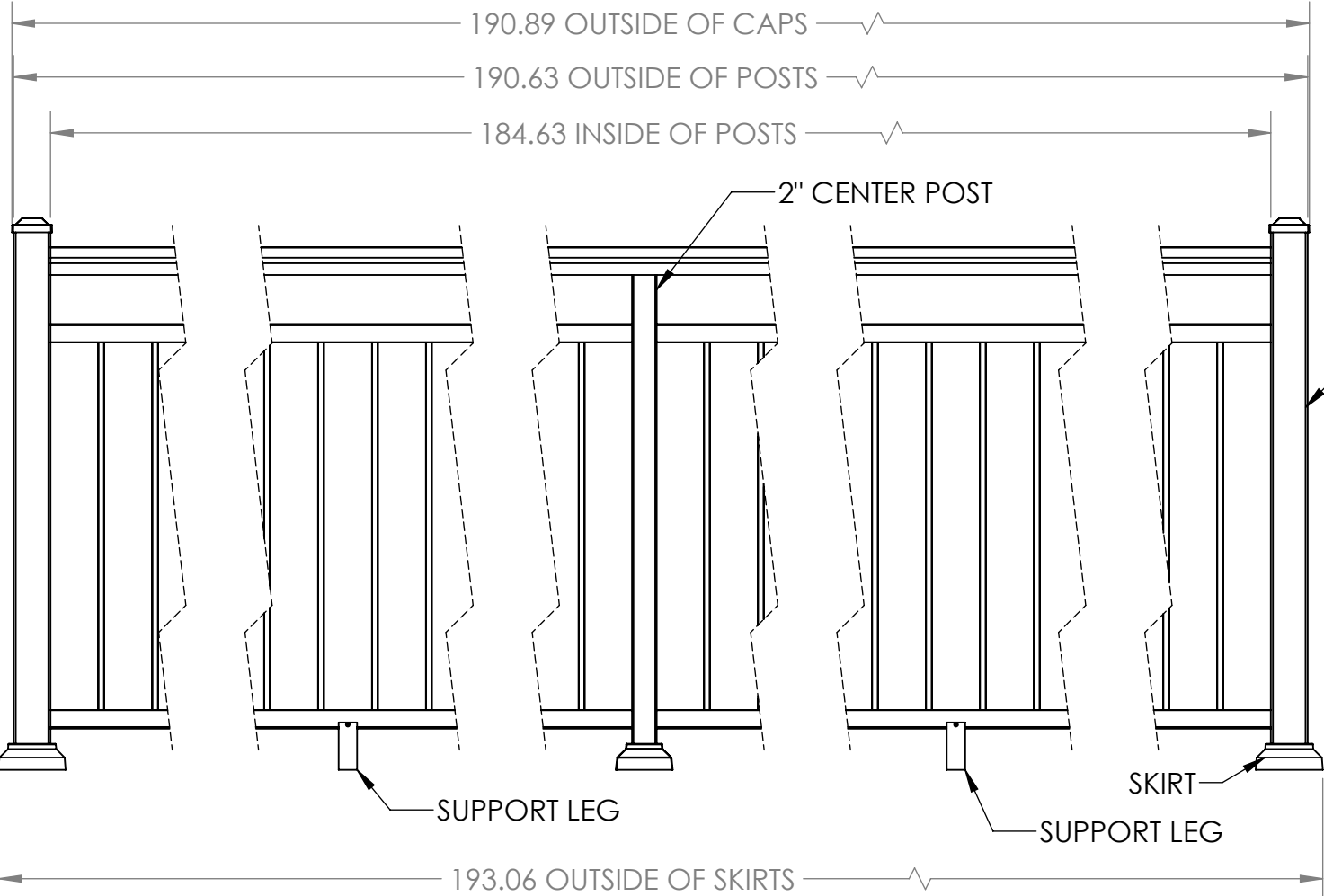
4

3

2

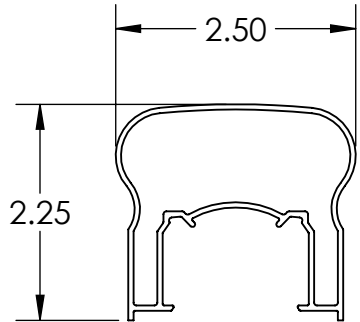
1

REVISIONS - BALLOONS DENOTE CHANGES			
REV.	DESCRIPTION	DATE	APPROVED
A		4/20/2020	ZAG

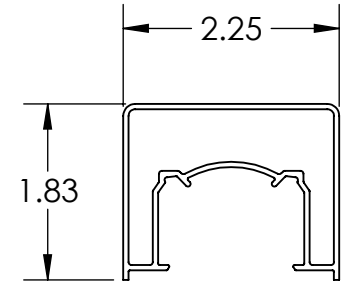


10X CLIP DETAIL

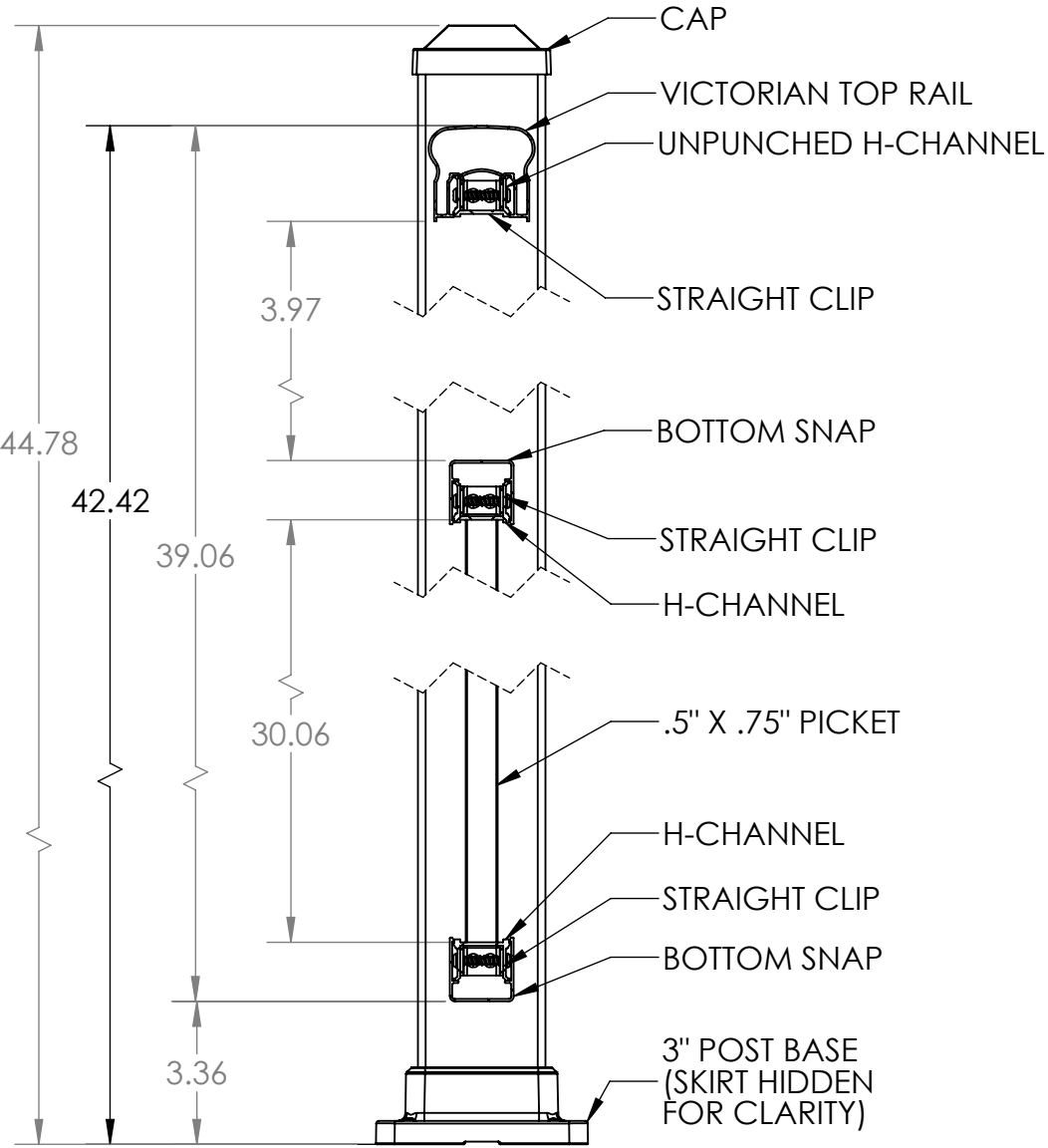
1X 2" POST CROSS OVER BRACKET (MOUNTS TO TOP OF CENTER POST)



VICTORIAN TOP RAIL





ALTA TOP RAIL IS AN ALTERNATIVE OPTION WITH A 42.00" OVERALL HEIGHT



SECTION A-A

NOTES:
1. ALL RAIL MUST BE ASSEMBLED AND FASTENED IN ACCORDANCE WITH ULTRALOX'S INSTALLATION INSTRUCTIONS.
2. AVAILABLE COLORS ARE BLACK - WHITE - BRONZE.

UNLESS OTHERWISE SPECIFIED:		NAME	DATE	 ULTRALOX® RAILING SYSTEMS			
DIMENSIONS ARE IN INCHES TOLERANCES:		DRAWN	DRC	4/20/20	TITLE: COMBINATION 42" TOP RAIL PICKET INFILL WITH OPEN MID RAIL 3" END POSTS - 2" INTERMEDIATE POSTS BASE MOUNT - 8' SPANS		
SURFACE FINISH: 125 RMS		CHECKED					
ANGULAR: ±.5 DEG		ENG APPR.					
LINEAR: .X ±.02 .XX ±.010 .XXX ±.005		MFG APPR.					
THIRD ANGLE PROJECTION:		INTERPRET GEOMETRIC TOLERANCING PER: ASME Y14.5-2009					
MATERIAL	PROPRIETARY AND CONFIDENTIAL				SIZE	DWG. NO.	REV
FINISH	THE INFORMATION CONTAINED IN THIS DRAWING IS THE SOLE PROPERTY OF UltraLox. ANY REPRODUCTION IN PART OR AS A WHOLE WITHOUT THE WRITTEN PERMISSION OF UltraLox.				B		A
DO NOT SCALE DRAWING					WEIGHT:		SHEET 1 OF 1