

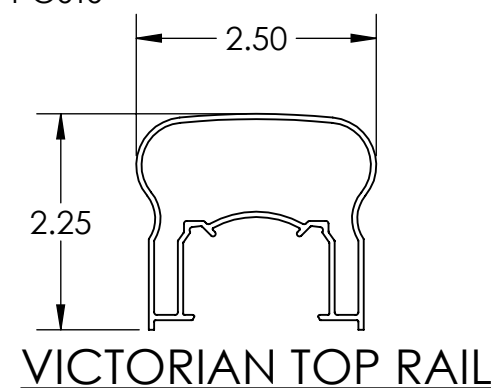
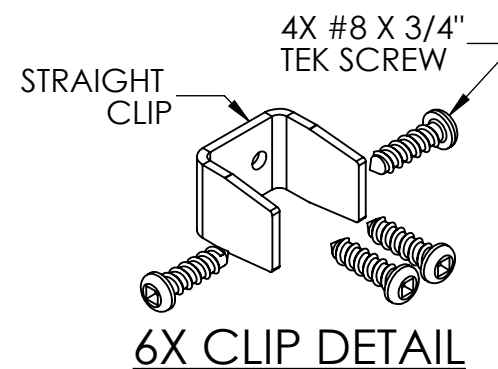
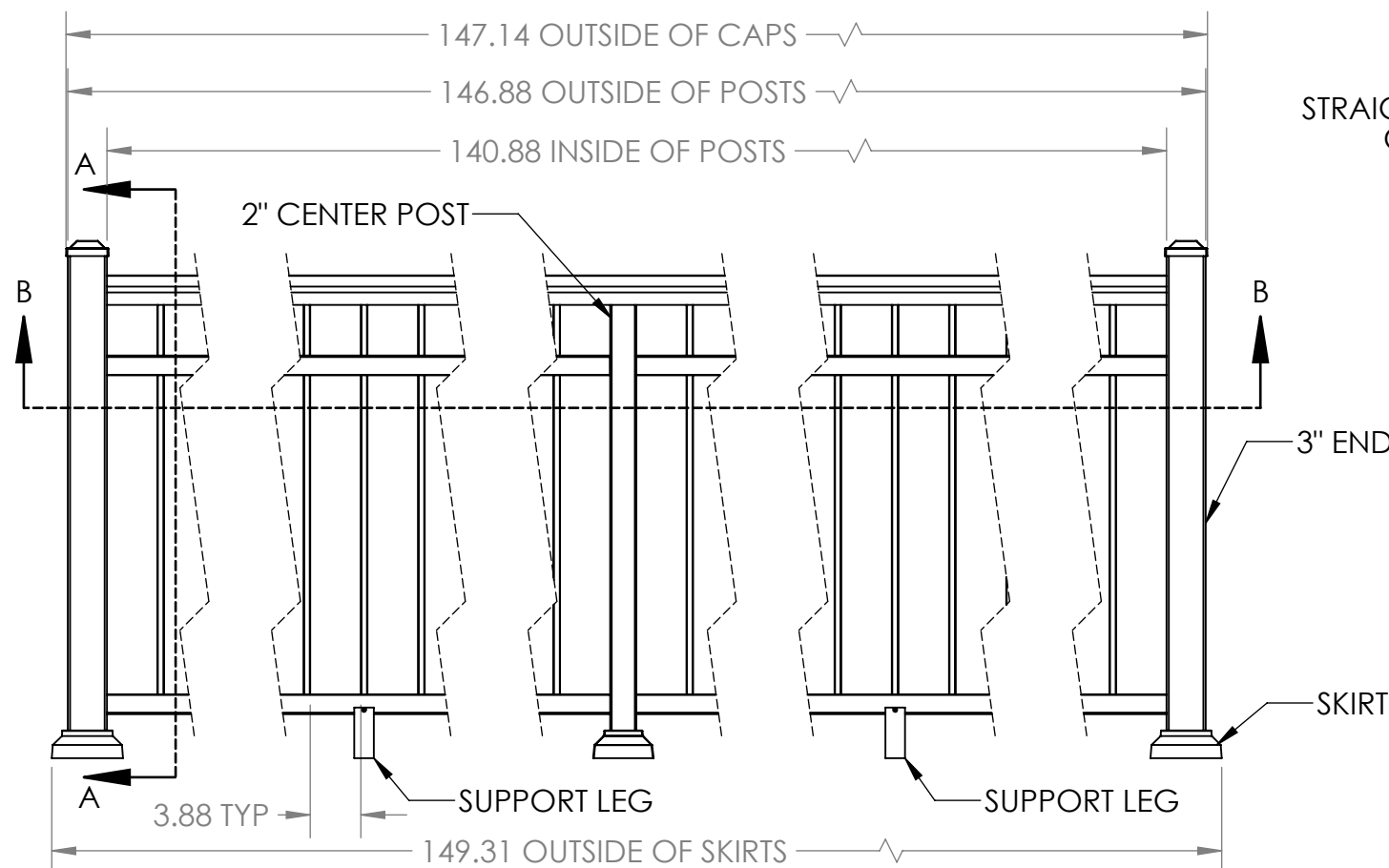
4

3

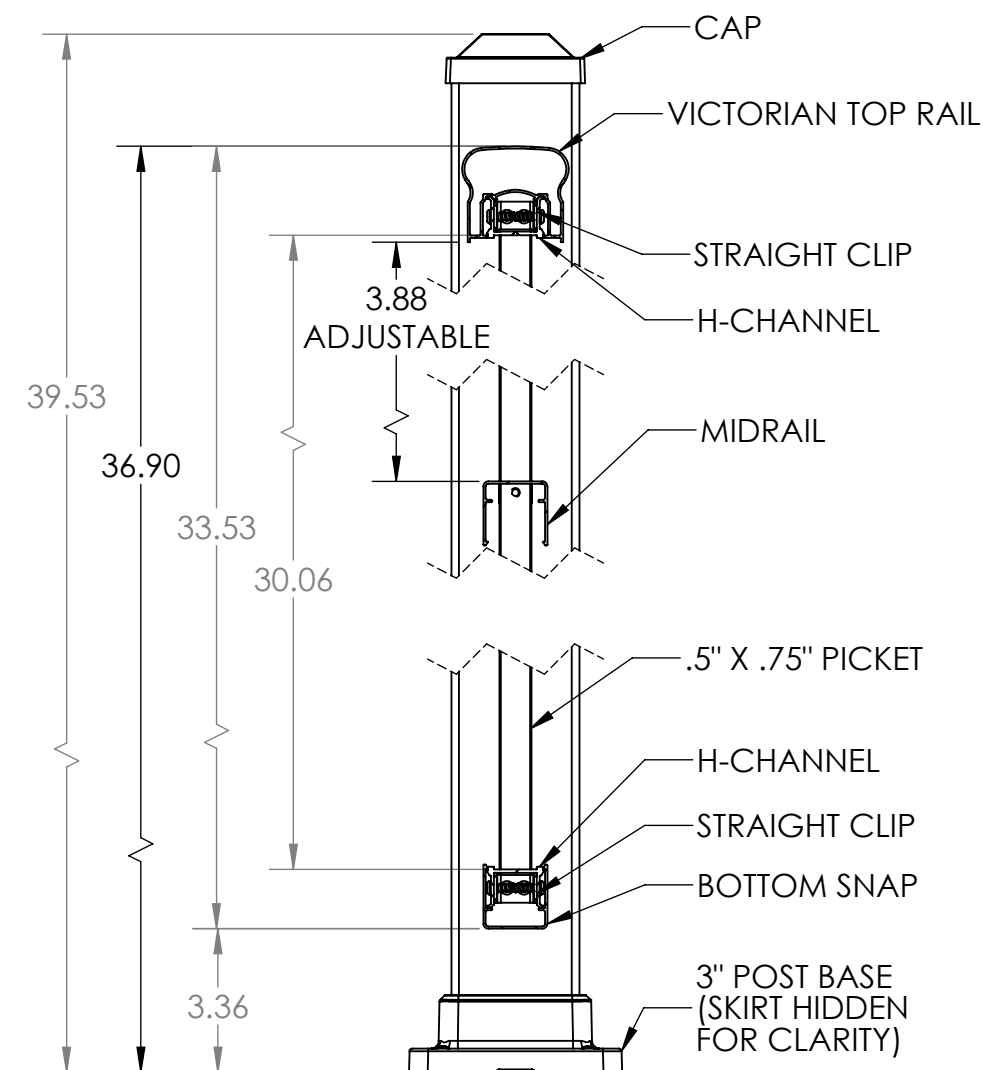
2

1

REVISIONS - BALLOONS DENOTE CHANGES			
REV.	DESCRIPTION	DATE	APPROVED
A		3/20/2020	ZAG



ALTA TOP RAIL IS AN  
ALTERNATIVE OPTION WITH A  
36.48" OVERALL HEIGHT



SECTION A-A

#10 x .75" TEK  
SCREW SECURES  
MIDRAIL TO PICKET

#10 x 1.50" TEK  
SCREW SECURES  
MIDRAIL TO PICKET

4X #8 X 3/4"  
TEK SCREW



2X #8 X 1.50"  
TEK SCREW

CROSS OVER  
BRACKET

1X 2" CROSS  
OVER BRACKET  
(MOUNTS ON TOP  
OF CENTER POST)

SECTION B-B

- NOTES:  
1. ALL RAIL MUST BE ASSEMBLED AND FASTENED IN ACCORDANCE WITH ULTRALOX'S INSTALLATION INSTRUCTIONS.  
2. AVAILABLE COLORS ARE BLACK - WHITE - BRONZE.

UNLESS OTHERWISE SPECIFIED:		NAME	DATE	<div></div>		
DIMENSIONS ARE IN INCHES		DRAWN	DRC	3/20/20	TITLE:  COMBINATION 36" TOP RAIL PICKET WITH MID RAIL - 3" END POSTS 2" MIDDLE POSTS - BASE MOUNT 6' SECTIONS	
TOLERANCES:		CHECKED				
SURFACE FINISH: 125 RMS		ENG APPR.				
ANGULAR: ±.5 DEG		MFG APPR.				
LINEAR: .X ±.02 .XX ±.010 .XXX ±.005						
THIRD ANGLE PROJECTION: 	INTERPRET GEOMETRIC TOLERANCING PER: ASME Y14.5-2009			SIZE <b>B</b> <div>DWG. NO.</div> <div>REV <b>A</b></div>		
MATERIAL	PROPRIETARY AND CONFIDENTIAL					
FINISH	THE INFORMATION CONTAINED IN THIS DRAWING IS THE SOLE PROPERTY OF UltraLox. ANY REPRODUCTION IN PART OR AS A WHOLE WITHOUT THE WRITTEN PERMISSION OF UltraLox.					
DO NOT SCALE DRAWING						
				WEIGHT:		SHEET 1 OF 1

4

3

2

1