

4

3

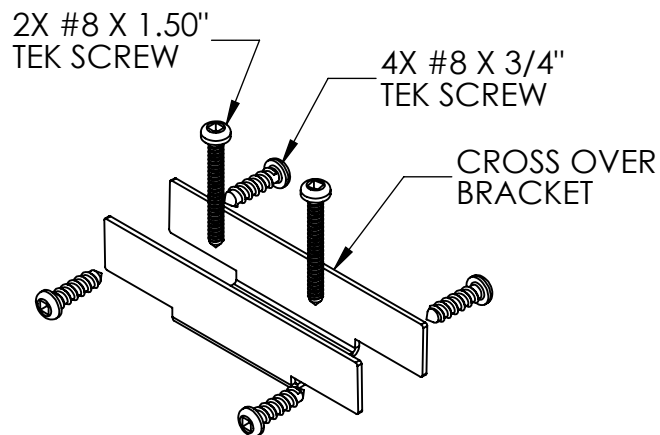
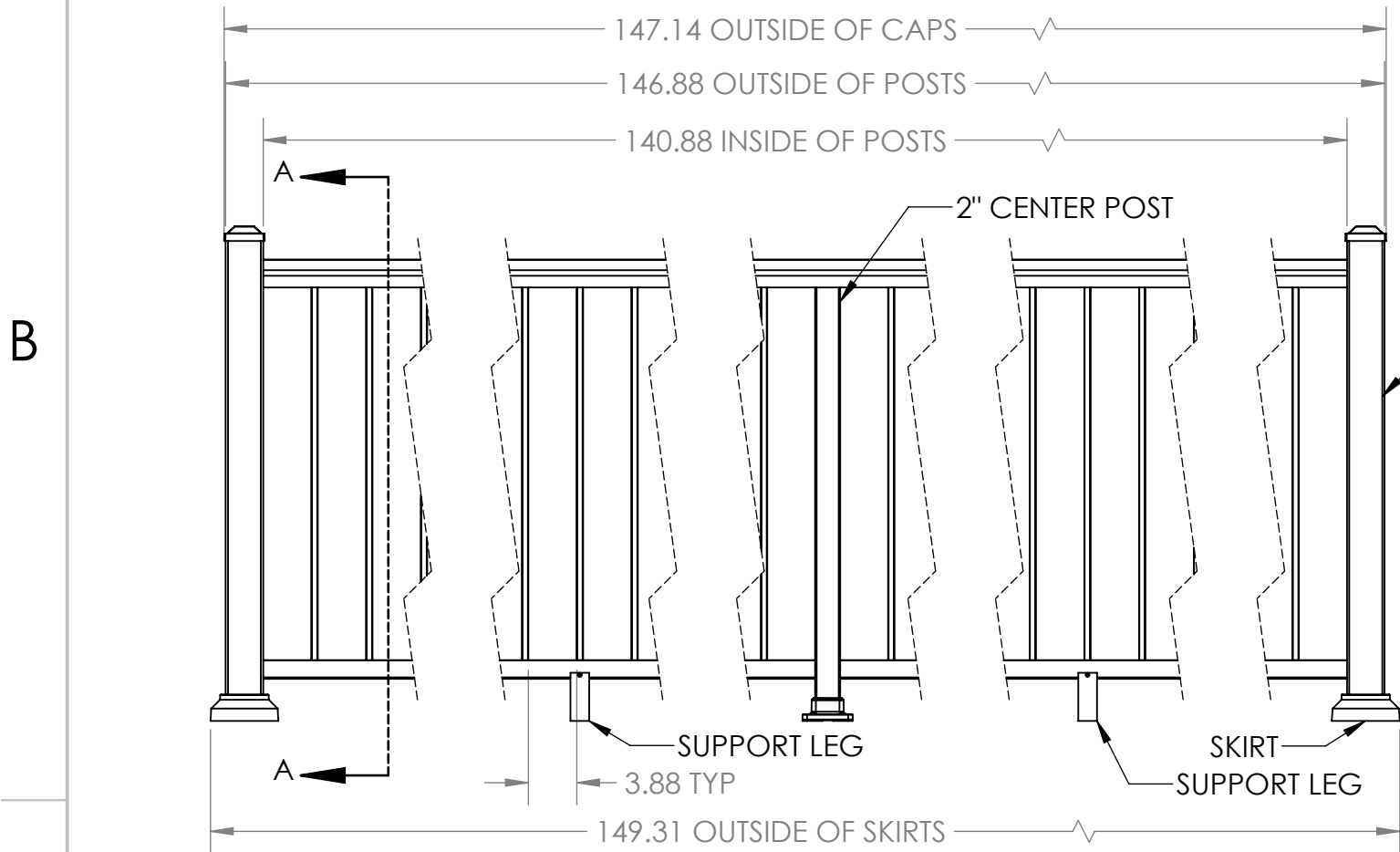
2

1

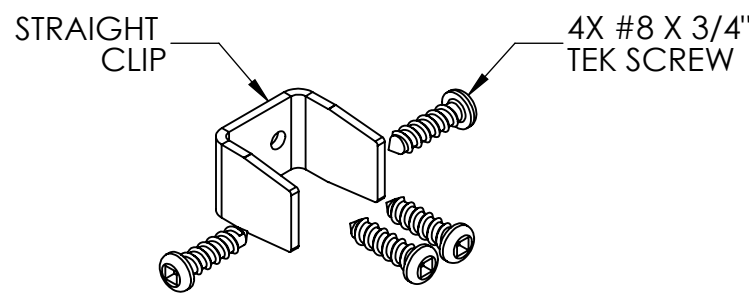
REVISIONS - BALLOONS DENOTE CHANGES			
REV.	DESCRIPTION	DATE	APPROVED
A		4/21/2020	ZAG

B

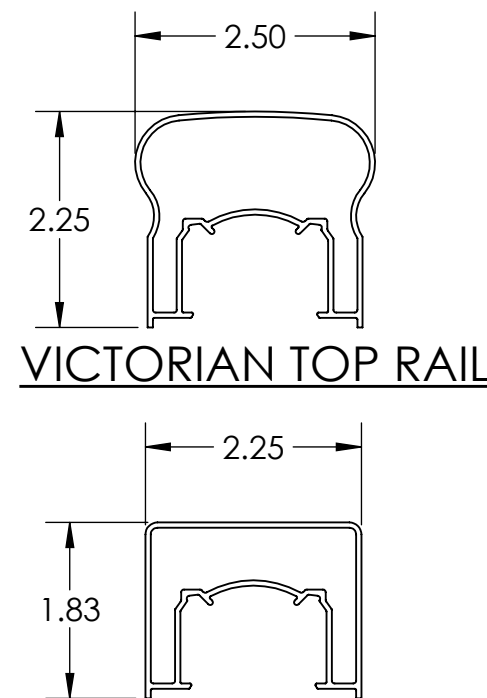
A



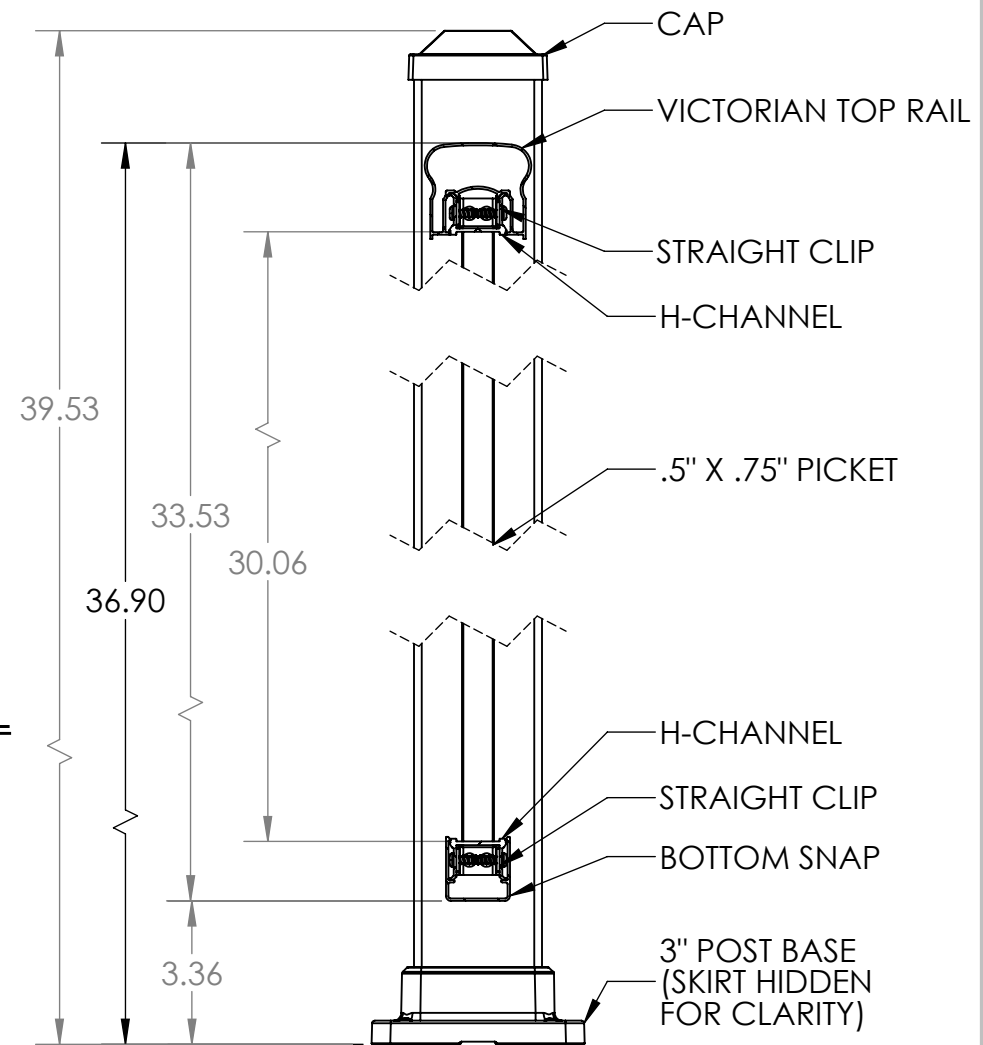
1X 2" CROSS OVER BRACKET (MOUNTS ON TOP OF CENTER POST)



6X CLIP DETAIL





ALTA TOP RAIL IS AN ALTERNATIVE OPTION WITH A 36.48" OVERALL HEIGHT



SECTION A-A

- NOTES:  
1. ALL RAIL MUST BE ASSEMBLED AND FASTENED IN ACCORDANCE WITH ULTRALOX'S INSTALLATION INSTRUCTIONS.  
2. AVAILABLE COLORS ARE BLACK - WHITE - BRONZE.

UNLESS OTHERWISE SPECIFIED:		NAME	DATE	<div></div>		
DIMENSIONS ARE IN INCHES		DRAWN	DRC	4/21/20	TITLE: COMBINATION 36" TOP RAIL PICKET INFILL - 3" END POSTS 2" MIDDLE POSTS - BASE MOUNT 6' SECTIONS	
TOLERANCES:		CHECKED				
SURFACE FINISH: 125 RMS		ENG APPR.				
ANGULAR: ±.5 DEG		MFG APPR.				
LINEAR: .X ±.02 .XX ±.010 .XXX ±.005						
THIRD ANGLE PROJECTION: 		INTERPRET GEOMETRIC TOLERANCING PER: ASME Y14.5-2009				
MATERIAL		PROPRIETARY AND CONFIDENTIAL			SIZE DWG. NO.	REV
FINISH		THE INFORMATION CONTAINED IN THIS DRAWING IS THE SOLE PROPERTY OF UltraLox. ANY REPRODUCTION IN PART OR AS A WHOLE WITHOUT THE WRITTEN PERMISSION OF UltraLox.			B	A
DO NOT SCALE DRAWING					WEIGHT:	SHEET 1 OF 1

4

3

2

1

B

A